

Valley Gardens

Restoration Planning and Concepts for Improvement

Briefing to
Friends of Valley Gardens
By
Patrick Kilburn, Harrogate Borough
Council

8 April 2010



Restoration Planning – The Beginning

- 1995/ 1997 Consultation and development of proposals for Valley Gardens
- 1997 First proposals published by Camlin Lonsdale
Not progressed - Lack of funding
- 2001 Application to Heritage Lottery Fund for £10,000
Match funding from Harrogate Borough Council £10,000
- 2001 Appointed LDA and started research and consultation to develop proposals.
- 2002 Work up proposals for consideration for consultation.
- 2003 Draft Restoration Plan completed.



Restoration Plan Process

Consult local organisations and council officers

Research history

Evaluate the existing site

Investigate strategic matters

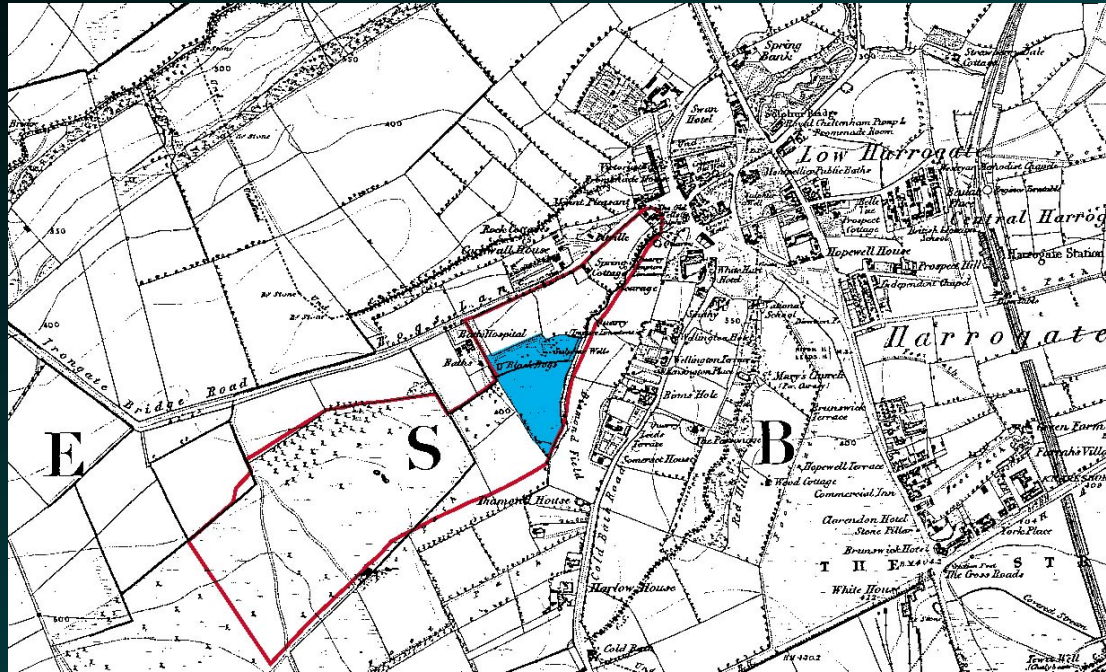
Initial proposals

Consult widely

Finalise proposals, management implications and cost

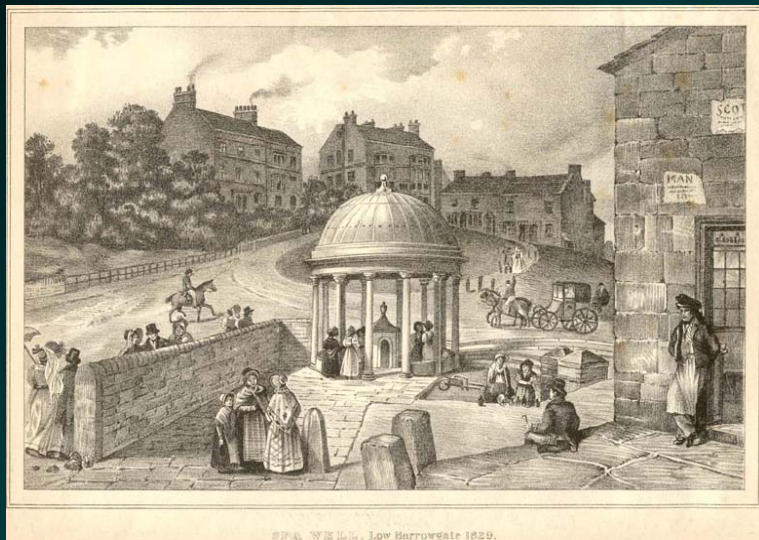


The Site prior to its Development



- Farmland until 18th century
- Popular Spa led to hotels, theatre, promenade rooms
- Stray designated under Acts of Parliament 1770
- Award of 1778 protected access to the springs of Bogs Field.





Spa Well, Low Harrogate 1829



The Royal Pump Room of 1842 replaced the Oak Covered Well Head





The Magnesia Well Pump House in Bogs Field circa. 1860

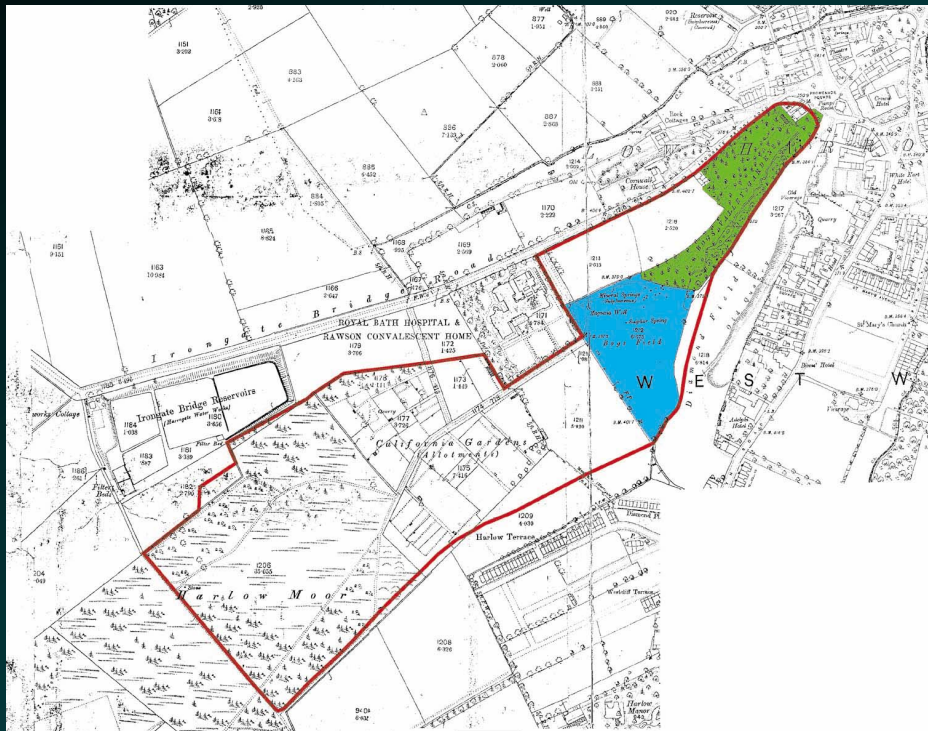




Path to Bogs Field from Valley Drive.



Layout of Original Pleasure Grounds



- Harrogate continues to develop with the arrival of the railway, the linking of Low and High Harrogate and the town's incorporation as a Borough in 1884
- In 1886 a design competition was held for the laying out of "Public Pleasure Grounds" along the footpath from the Royal Pump Room to Bogs Field





An early photograph showing the boundary hedge and trees to Collins Field, elaborate flower beds and the rustic bridge over the stream

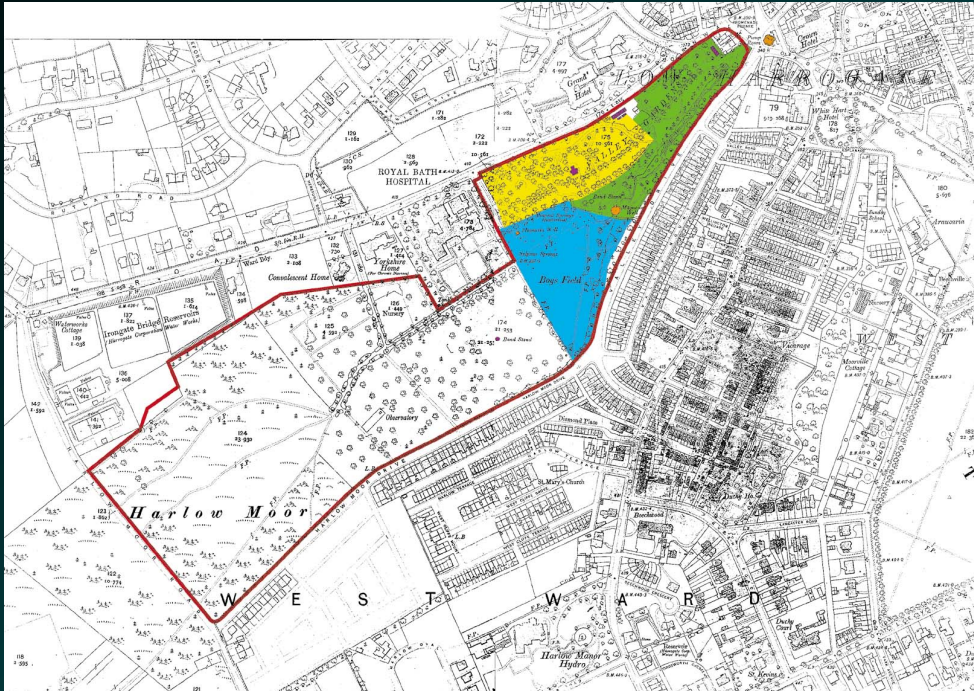




The Magnesia Well new pump room was opened in 1895



Extension of the Gardens to Collins Field and Bogs Field



- In 1901 Collins Field was purchased and laid out as an addition to the Gardens.
- A tea house and bandstand provided a new focus to promenades and further opportunities for socialising and enjoyment.
- In 1911 it was linked to Bogs Field.





A postcard circa. 1900 showing the Collins Field extension
Note the newly planted lime trees

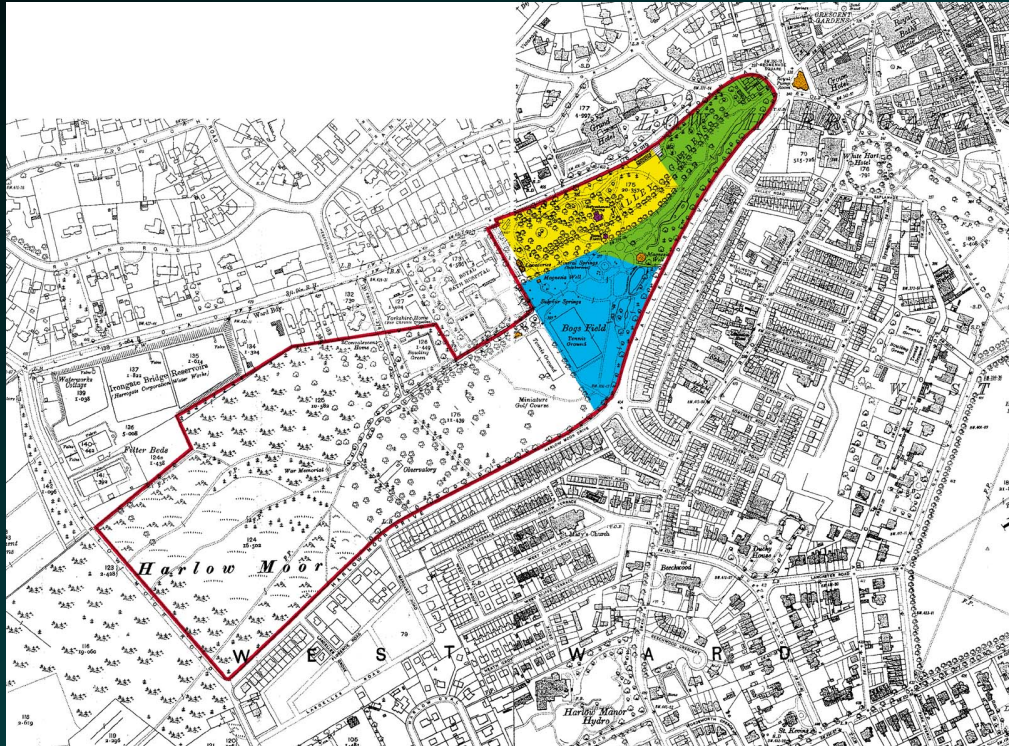




The bandstand erected on the slopes above Bogs Field circa. 1900.



The Incorporation of Bogs Field



- This plan is immediately before the addition of the Sun Pavilion
- Paths were laid out in Bogs Field and recreation facilities provided : tennis court, a miniature golf course and model boating pond





- The Sun Pavilion and Colonnades were constructed in 1932
- The building followed an earlier idea to link Bogs Field and the Royal Pump Room with a covered promenade
- The Sun Pavilion was refurbished in 1998 with a grant from the Heritage Lottery Fund





The Model Boating Pool, Post World War II





A picture from a 1950s guide book reflecting Harrogate's pride in the Gardens, their quality, variety and reflection of contemporary horticultural fashion



Contemporary Issues

Consultation with local groups and Borough Council officers highlighted particular issues.

Security and Personal Safety

Recognition of the Importance of Valley Gardens

The Role of the Gardens in the C21st

Enjoyment Heavily Dependent upon Weather

Meeting Place/Events Space

Toilets

Provision for Young People

Bandstand

Condition and Resources



Strategic Issues

In developing the proposals consideration has been given to a broad range of influences beyond the boundary of Valley Gardens.

- Tourism : Visiting the Gardens is an integral part of the Harrogate experience. 85% of visitors to Harrogate visit the Valley Gardens.
- Economy : Complements the environment of Harrogate encouraging inward investment and supporting the conference facilities
- Horticulture : Few public parks have such a reputation for floral display, and varied plant collections
- Access : Routes through the Gardens are important pedestrian links between the town centre and residential areas.
- Education : Valley Gardens has a rich history associated with the development of Harrogate and is close to the Pump Room Museum and Mercer Art Gallery. There is great potential to explain the history of the site.
- Disabled : Opportunity to encourage links with The Yorkshire Centre for the Disabled.



Aims of the Restoration Plan

The aim of the proposals is to integrate the history, existing site conditions and issues as well as the strategic factors affecting Valley Gardens.

- To celebrate the unique collection of springs and their role in the development of Harrogate as a Spa town
- Conserve the character and diversity of the Gardens
- To enhance the sensory experience of visiting the Gardens
- To provide an all weather, year round attraction
- To enable greater appreciation of the Gardens and to encourage the development of skills and training
- To develop contemporary facilities to meet the needs of the full range of age groups and abilities
- To improve security and the perception of personal safety
- To complement Harrogate's cultural, social and economic objectives



Illustrative Proposals



Buildings

1. Magnesia Well Pump House
2. Magnesia Well Café
3. Sun Pavilion
4. Colonnades and Sun Parlours
5. Bandstand
6. Toilet Block
7. Games Pavilion



Entrances

- 8. Main Entrance
- 9. Service Entrance
- 10. Green Park Entrance
- 11. Cornwall Road Entrance



Gardens

12. Bogs Field
13. Spring Garden
14. Elgar Walk and Stream
- 15.. Valley Island Flower Bed
16. Lime Walk
17. Rose Garden
18. New Zealand Garden
19. Japanese Garden
20. Herbaceous Border
21. Relocate Dahlia Border



Play and Sport

- 22. Play Area
- 23. Toddlers' Play Area
- 24. Pitch and Putt
- 25. Crazy Golf
- 26. Boating Pool
- 27. Teen Area



General

Site paths including link between
Ebor Rise and Valley Drive

Improve park furniture

Woodland Management

Education Programmes

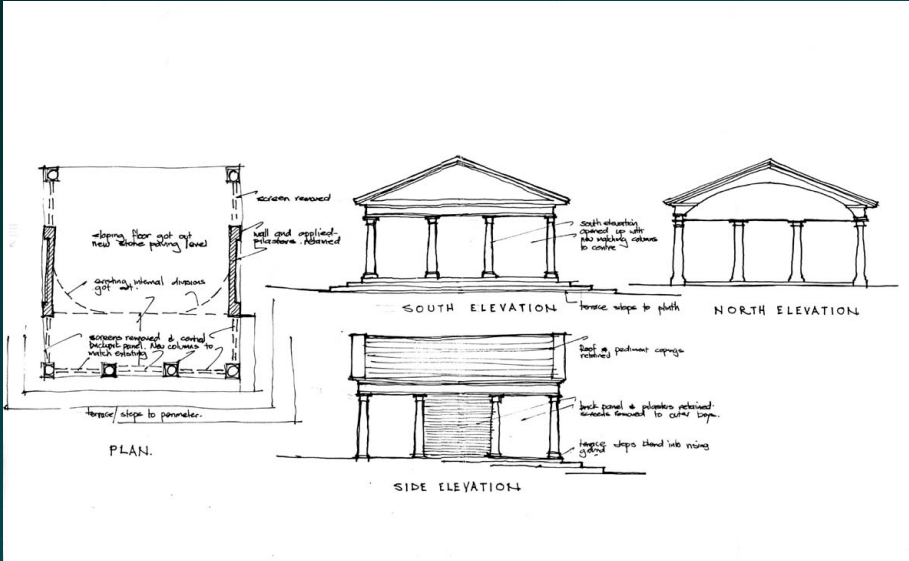
Produce Management Plan

Consider Security Measures

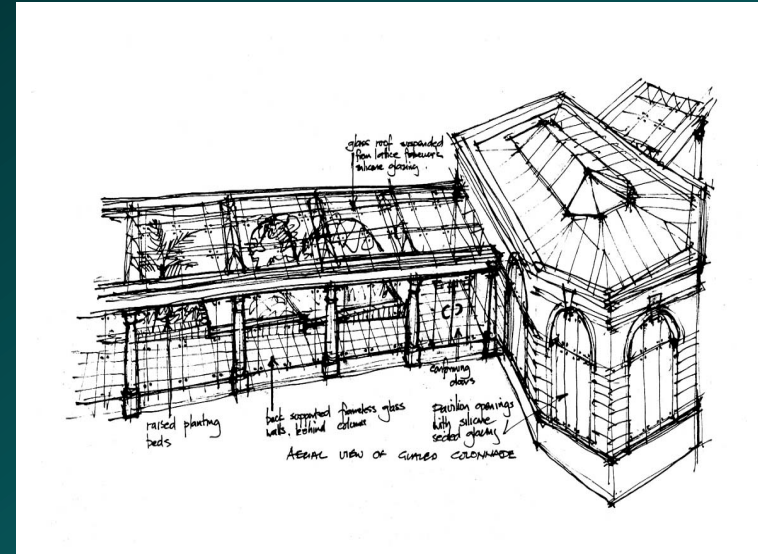
Partnership with Museum Service
and RHS Harlow Carr



Modify Bandstand



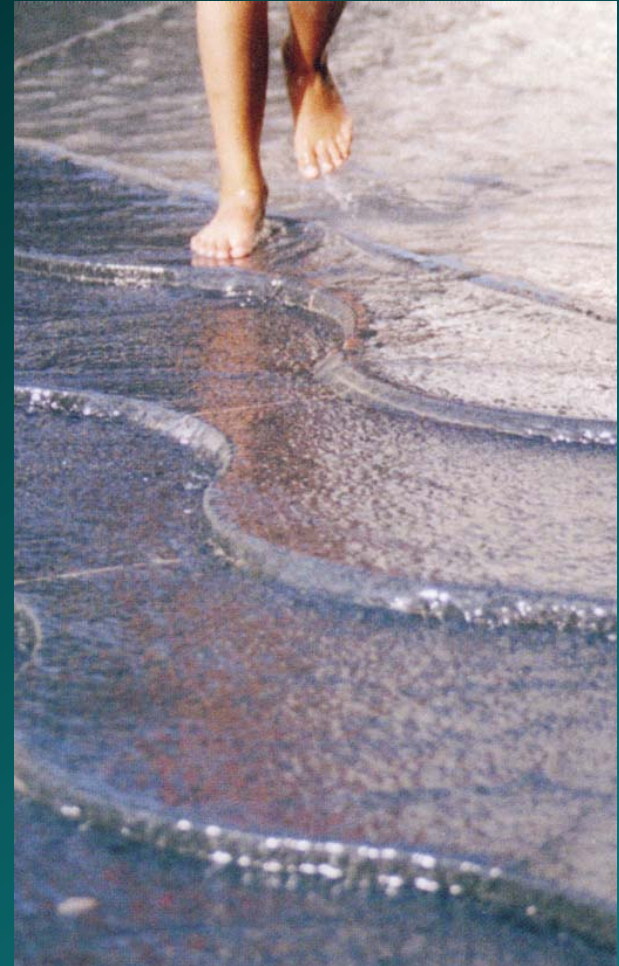
Create a Winter Garden



Improvements to Play Opportunities



Celebrating Springs



Ornamental Planting



Consultation Undertaken

- 8 July 2001 – Party in the Park
- August – October 01 Meetings, telephone interviews and questionnaires to Groups, individuals, Councillors and officers of the Council.
- 18 June 2002 Presentation on proposals to all Councillors (Crescent Gardens) – Feedback forms available
- 19 June 2002 Public Meeting - Presentation on proposals to public (Sun Pavilion) – Feedback forms available
- June/July 2002 – Presentation boards located at Mercer Gallery and Hydro each for 3 weeks – Feedback forms available
- July 2002 Schools consulted on educational proposals



Current Situation

Improvements

- Play area refurbishment completed – range of equipment provided for a wide range of children and young people;
- Rose bed removed as part of plan;
- Scree Garden Refurbished;
- New Zealand Garden – Currently being worked on;
- Boating pool deepened and outlet improved; and
- Decision taken to provide skate/BMX park as teen facilities.

Financial

- Commuted Sums either expended or committed
- £10,000 bequest spent on New Zealand Garden
- Very limited funds available for future projects at present – need to secure funds for further projects

